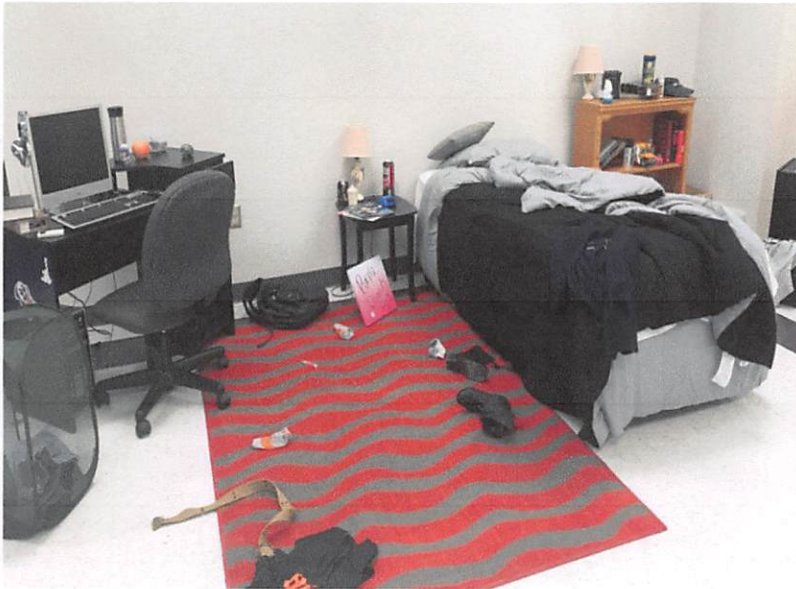


HIDDEN IN PLAIN SIGHT



The teen years can be difficult. Indicators of teen drug use, mental health concerns, unhealthy relationships, human trafficking and other risk factors can be hidden in plain sight, but easy for parents and other adults to miss.

Join us to learn about current trends, how to recognize common warning signs and how to talk to youth about these important issues.

Parents of middle schoolers, caregivers and other adults who work with youth are encouraged to attend.

***Must be 18+ to attend (school-aged child activities will be available on site, provided by the Girl Scouts of WW)**

Washington State
Health Care Authority



EVENT DETAILS

HANDS ON

Participants will walk through a mock teen bedroom and try to identify 70+ items, which can indicate problem or risky behaviors.

PRESENTATION

After walking through the teen room, attendees will participate in a presentation and discussion which will cover:

- Identification and discussion of items and how they may indicate problem or risky behaviors
- Popular local youth trends
- Tools to help navigate the teen years and discussion points for family conversations

RESOURCES

Local resources will be available for all participants. Tacoma-Pierce County Health Department will join us to give a 30-minute presentation.

EVENT INFORMATION

Date: Wednesday, May 1, 2019

Time: 5:30pm-7:30pm

Location: Bethel Learning Center

(21630 38th Ave E Spanaway, WA 98387)

Cost: Free (walk-ins are welcome)

To best plan for meals and child activities, please RSVP

Donna Saling via text or email
253-686-7724

donnasaling@comcast.net

*Refreshments will be provided between